

ø192 x H250 (mm)  
Rth 0.22 °C/W  
Power Pd 228 W

[MORE PRODUCT DETAILS](#)

## CoolBay® Tera-A Citizen Advanced High Bay LED Cooler ø192mm

### Mounting Options

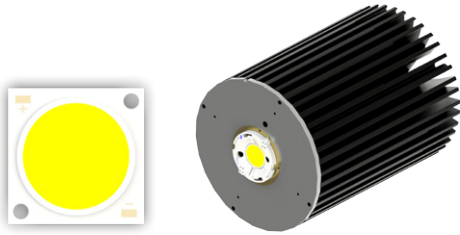
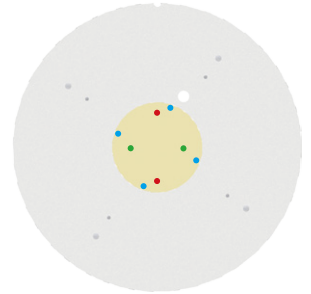
## CITIZEN

Micro HumanTech

Citizen Electronics Co., Ltd. is a precision electronics manufacturer with headquarters in Fujiyoshida City, Yamanash Japan. Prefecture and a subsidiary of Citizen Holdings Co., Ltd. Citizen Electronics is a leader in LED light sources for electronic devices and high power white LED lamps. The second generation CITED LED CLL LED COB modules and the new upcoming generation CLU distinguish themselves through the combination of high lumen per watt performance combined with a perfect light quality control.

### Mounting indicator marks overview

MechaTronix recommends the use of a high thermal conductive interface between the LED module and the LED cooler. Either thermal grease, a thermal pad or a phase change thermal pad thickness 0.1-0.15mm is recommended. Thermal pads or phase change thermal pads can be pre-applied from MechaTronix.



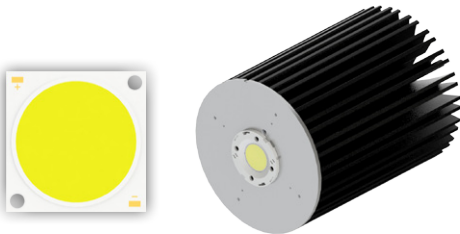
### Citizen Cited COB CLU048

#### Model names

- CLU048-xxxxxx

#### Mounting

- With LED holder  
BJB spotlight connector 47.319.2033  
Ideal Industries Chip-Lok™ holder 50-2204CT  
Mounting with 2 screws M3 x 6mm  
Green indicator marks



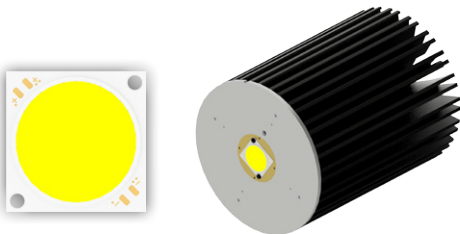
### Citizen Cited COB CLU058

#### Model names

- CLU058-1825C4

#### Mounting

- Direct mounting with 2 screws M3 x 4mm  
Red indicator marks
- With LED holder  
BJB spotlight connector 47.319.4160.50  
Mounting with 4 screws M3 x 6mm  
Blue indicator marks



### Citizen Cited COB CLU550

#### Model names

- CLU550-xxxxC1

#### Mounting

- Direct mounting with 2 screws M3 x 6mm  
Red indicator marks