

ø192 x H250 (mm)
Rth 0.22 °C/W
Power Pd 228 W

[MORE PRODUCT DETAILS](#)

CoolBay® Tera-A Seoul Semiconductor Advanced High Bay LED Cooler ø192mm

Mounting Options



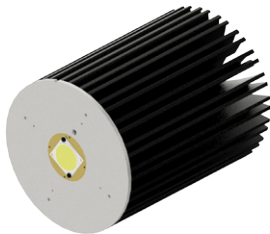
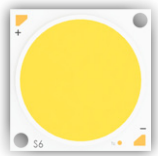
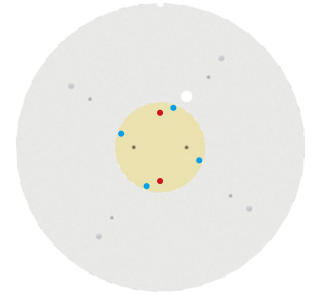
SEOUL SEMICONDUCTOR

The CoolBay® Tera-A comes with mounting patterns for the broadly used 28x28mm COB and 38x38mm COB sizes, as well as with the Zhaga Book 3 mounting holes to accommodate a wide range of LED holders for various brands.

The wetting (contact between the LED engine and the LED cooler) is lifespan for these high power leds, so we suggest you to measure besides the Tc point also a place on the LED cooler near the contact area - when a temperature difference is observed than 10°C between these 2 points there is a potential contact issue.

Mounting indicator marks overview

MechaTronix recommends the use of a high thermal conductive interface between the LED module and the LED cooler. Either thermal grease, a thermal pad or a phase change thermal pad thickness 0.1-0.15mm is recommended. Thermal pads or phase change thermal pads can be pre-applied from MechaTronix.



Seoul Semiconductor ZC 100 LED COB

Model names

- SDW07F1C
- SDW87F1C
- SDW97F1C

Mounting

- Direct mounting with 2 screws M3 x 4mm
Red indicator marks
- With LED holder
BJB spotlight connector 47.319.4160.50
Mounting with 4 screws M3 x 6mm
Blue indicator marks