

ø192 x H250 (mm)
Rth 0.22 °C/W
Power Pd 228 W

[MORE PRODUCT DETAILS](#)

CoolBay® Tera-B Cree Advanced High Bay LED Cooler ø192mm

Mounting Options

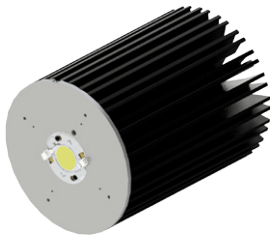
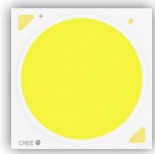
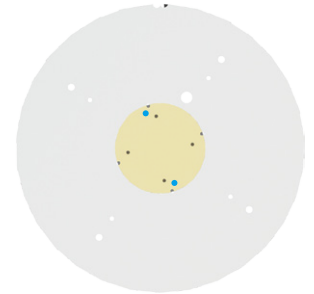


The CoolBay® Tera-B comes with specific mounting patterns for the Bridgelux Vero 29, Cree CXA35/CXB35 and Tridonic Talexx FLE LED engines.

The wetting (contact between the LED engine and the LED cooler) is lifespan for these high power leds, so we suggest you to measure besides the Tc point also a place on the LED cooler near the contact area - when a temperature difference is observed than 10°C between these 2 points there is a potential contact issue.

Mounting indicator marks overview

MechaTronix recommends the use of a high thermal conductive interface between the LED module and the LED cooler. Either thermal grease, a thermal pad or a phase change thermal pad thickness 0.1-0.15mm is recommended. Thermal pads or phase change thermal pads can be pre-applied from MechaTronix.



Cree XLamp CXA35 / CXB35 LED Array

Model names

- CXA3590-xxxx
- CXB3590-xxxx

Mounting

- With LED holder
Ideal Industries Chip-Lok™ holder 50-2303CR
Mounting with 2 screws M3 x 4mm
Blue indicator marks