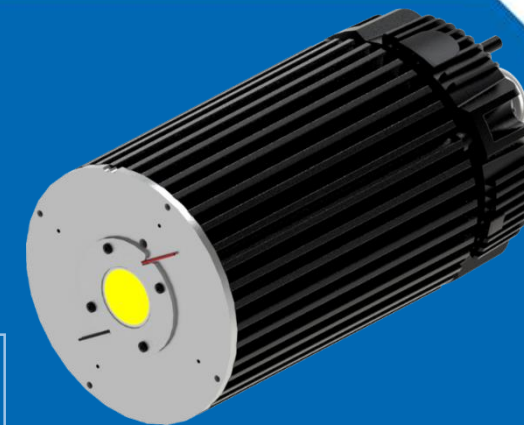


Thermal Test Report

CoolBay® Tera Narrow-01 + Citizen CLU058-1825C4-403M2K1

- Measurement of the temperature rise and case temperature of Citizen CLU048-1818C4-403M2K1 emitters with Bender+Wirth CoolConnect® holder COB 38x38.
- Under various driving currents 4000mA.



Date: 2016.08.31
Author: Saito Chen
Mail: saito@mechatronix-asia.com

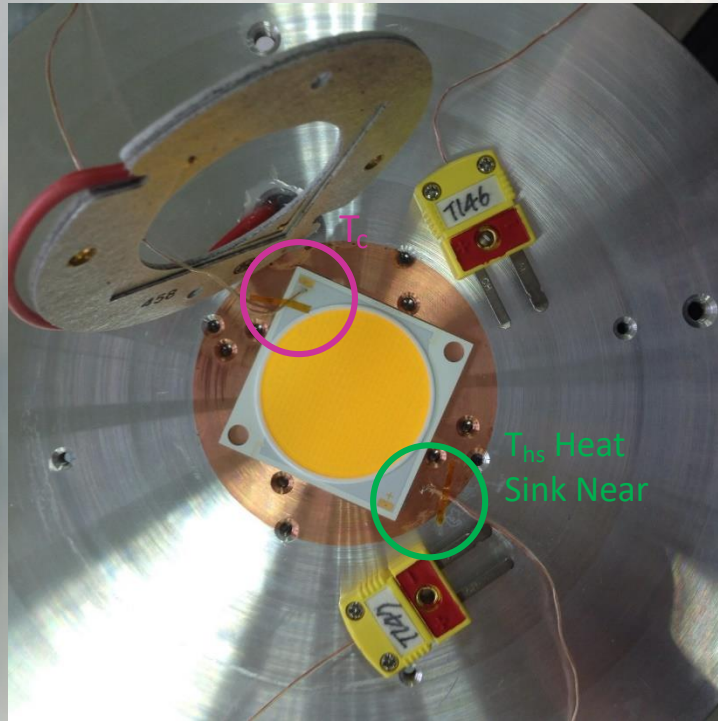
MechaTronix

www.led-heatsink.com

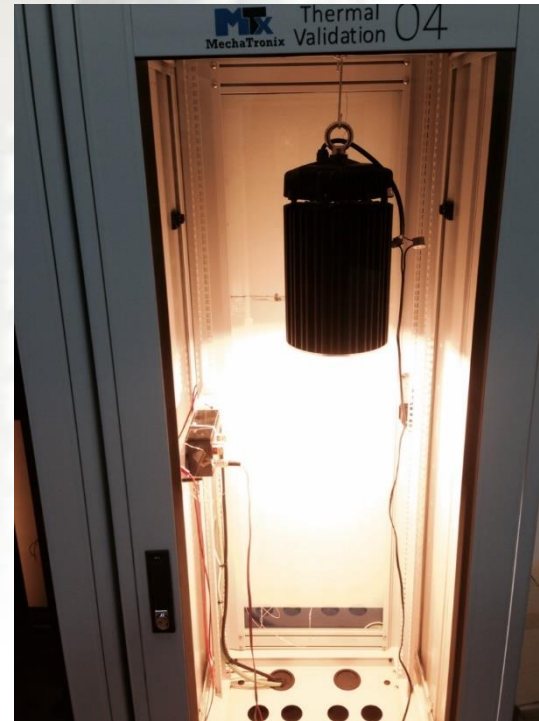
Tel: +886-7-381-5892 | Fax: +886-7-383-9293

No.818, Dashun 2nd Rd., Sanmin Dist., Kaohsiung City 80787, Taiwan

• Test Setup



Locations of T_c and T_{hs} Heat Sink Near

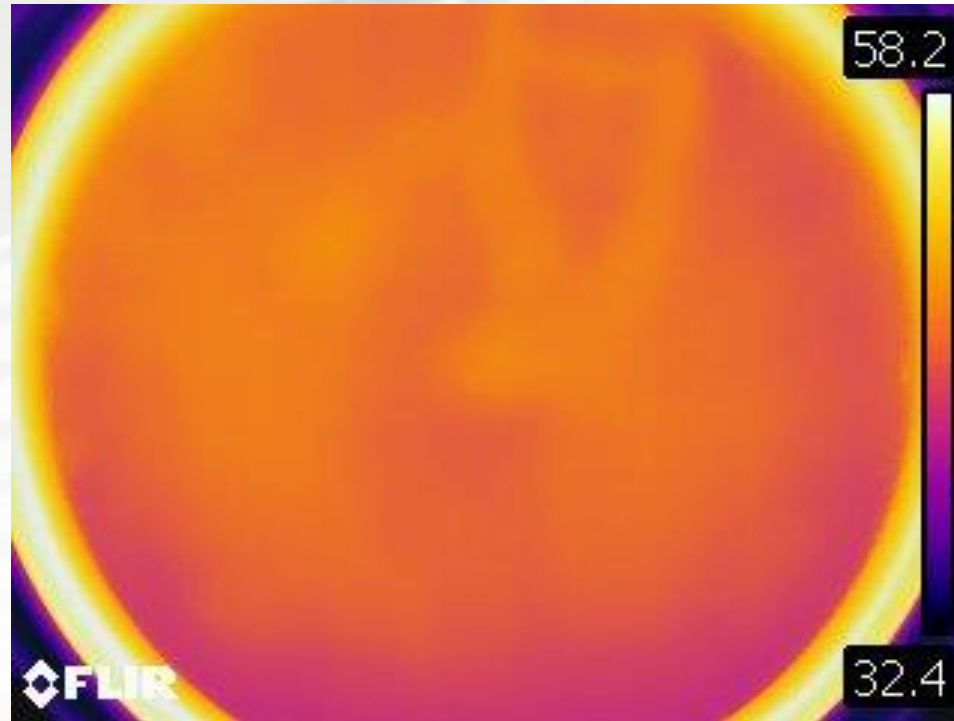


Test Set-up

- Heat sink:
CoolBay® Tera-B
- LED package:
Citizen CLU058-1825C4-403M2K1
- LED driver:
Mean Well HBG-240-60&HBG driver ring-02(M12)
- Connector set:
HBG-240 connector set
- LED holder:
Bender+Wirth CoolConnect® holder COB 38x38
- LED lens:
CoolBay Lens 60° Clear
- Thermal pad:
PSX-D
- If (mA):
4000

• IR Images

Photo by Infrared Camera
Model: FLIR-T62101



If: 4000mA

Results Table

| If (mA) | Stablization Time (Sec) | T _c (°C) | T _{hs} (°C) | T _{ambient} (°C) | ΔT_{hs-amb} heat sink rise temperature (°C) |
|---------|-------------------------|---------------------|----------------------|---------------------------|--|
| 4000 | 12920 | 69.16 | 67.65 | 27.64 | 41.52 |

Temperature Rise Curves

